



# Documenting Historic Structures

Jessica Fortney

Historic Preservation Specialist

Northern Bedrock Historic Preservation Corps

April 23, 2020 at 10am

- Photo Documentation
  - I am not a professional photographer
- Photos with Reports



**Northern Bedrock Historic Preservation Corps**  
*Building a pathway to the preservation trades*

# What do you want to say with your pictures and documentation?

- A snapshot in time
- To create a story
- Social media/Website



**Northern Bedrock Historic Preservation Corps**  
*Building a pathway to the preservation trades*

# Tools, Materials, Brain Power

- Camera
- Tripod (with level)
- Sun or Cloudy day if outside
- Step stool
- Scale



**Northern Bedrock Historic Preservation Corps**  
*Building a pathway to the preservation trades*



# Camera

- Simple camera
- Cell Phone



**Northern Bedrock Historic Preservation Corps**  
*Building a pathway to the preservation trades*

# Tripod with Level



**Northern Bedrock Historic Preservation Corps**  
*Building a pathway to the preservation trades*

# Tools, Materials, Brain Power

- ~~Camera~~
- ~~Tripod (with level)~~
- Sun or Cloudy day if outside
- Step stool
- Scale



**Northern Bedrock Historic Preservation Corps**  
*Building a pathway to the preservation trades*

# Shadow? Cloudy or Sunny Day



**Northern Bedrock Historic Preservation Corps**  
*Building a pathway to the preservation trades*



# Tools, Materials, Brain Power

- ~~Camera~~
- ~~Tripod (with level)~~
- ~~Sun or Cloudy day if outside~~
- Step stool
- Scale



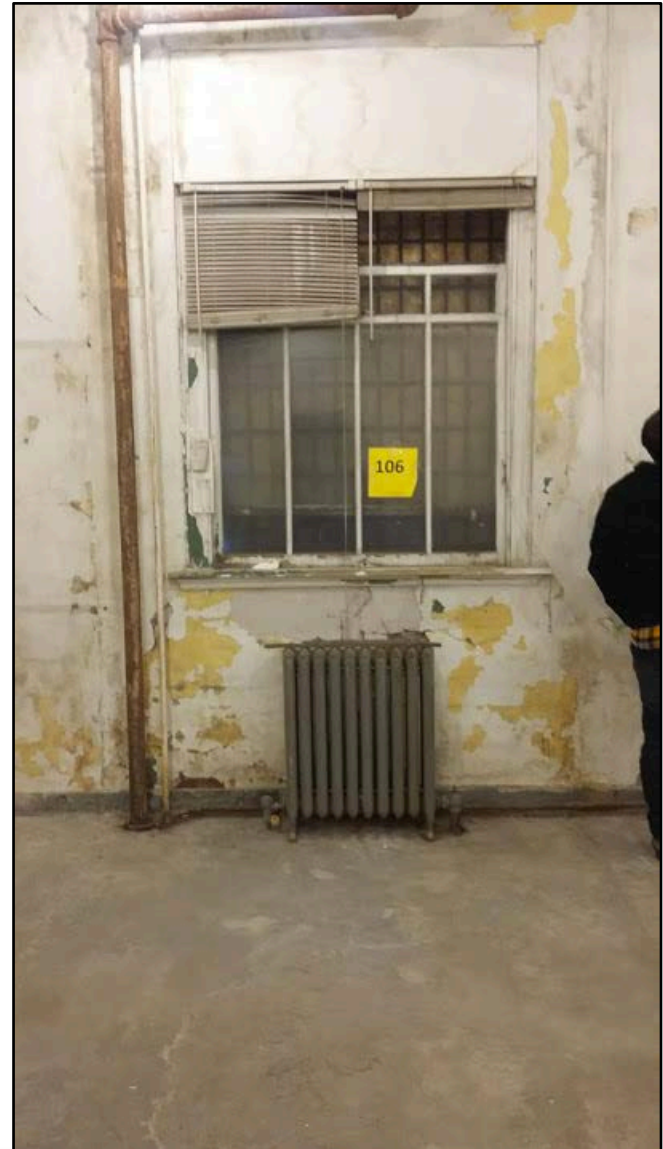
**Northern Bedrock Historic Preservation Corps**  
*Building a pathway to the preservation trades*

# Step Stool and Scale



**Northern Bedrock Historic Preservation Corps**  
*Building a pathway to the preservation trades*

# Point and Label



**Northern Bedrock Historic Preservation Corps**  
*Building a pathway to the preservation trades*







# Views

- 8 views
  - We can't move everything
- Context
- Character Defining Features
- Document issues



**Northern Bedrock Historic Preservation Corps**  
*Building a pathway to the preservation trades*



**Northern Bedrock Historic Preservation Corps**  
*Building a pathway to the preservation trades*





**Northern Bedrock Historic Preservation Corps**  
*Building a pathway to the preservation trades*

# Views

- ~~8 views~~
  - ~~We can't move everything~~
- Context
- Character Defining Features
- Document issues



**Northern Bedrock Historic Preservation Corps**  
*Building a pathway to the preservation trades*



# Feature, issue



**Northern Bedrock Historic Preservation Corps**  
*Building a pathway to the preservation trades*



**Northern Bedrock Historic Preservation Corps**  
*Building a pathway to the preservation trades*





**Northern Bedrock Historic Preservation Corps**  
*Building a pathway to the preservation trades*



**Northern Bedrock Historic Preservation Corps**  
*Building a pathway to the preservation trades*





**Northern Bedrock Historic Preservation Corps**  
*Building a pathway to the preservation trades*



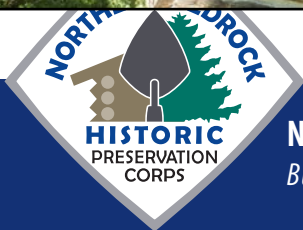
**Northern Bedrock Historic Preservation Corps**  
*Building a pathway to the preservation trades*

# Character Defining Feature



**Northern Bedrock Historic Preservation Corps**  
*Building a pathway to the preservation trades*





**Northern Bedrock Historic Preservation Corps**  
*Building a pathway to the preservation trades*





**Northern Bedrock Historic Preservation Corps**  
*Building a pathway to the preservation trades*



# Before and Afters



**Northern Bedrock Historic Preservation Corps**  
*Building a pathway to the preservation trades*

# Back to the Computer

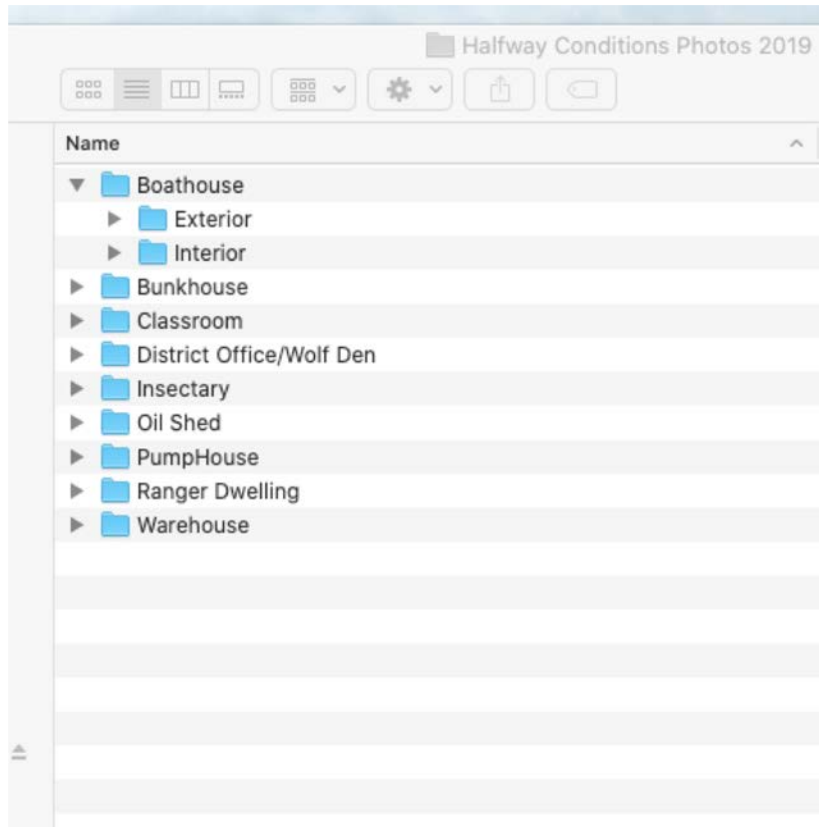
- Folders
  - What makes sense
- Spreadsheets
  - Photo logs, tables
- Labels
  - North, South, Front, Back, rotten log
- Document
  - Date, square footage, work done



**Northern Bedrock Historic Preservation Corps**  
*Building a pathway to the preservation trades*



# Folders



**Northern Bedrock Historic Preservation Corps**  
*Building a pathway to the preservation trades*

# Spreadsheets

- Photo Log

	A	B	C	D	E	F	G	
1	Date	Photographer	Photo ID	Stage of Work	Building	Work Project (Area of Work)	Photo Description	
2	3/13/2017	Kate Ruble	<a href="#">P3130042.JPG</a>	Site Visit	Pump House	Power Lines	On top of hill above Pump House, inspecting power line damage	
3	3/13/2017	Kate Ruble	<a href="#">P3130043.JPG</a>	Site Visit	Pump House	Power Lines	On top of hill above Pump House, inspecting power line damage	
4	3/13/2017	Kate Ruble	<a href="#">P3130044.JPG</a>	Site Visit	Pump House	Power Lines	Coil of old power lines taken down	
5	3/13/2017	Kate Ruble	<a href="#">P3130045.JPG</a>	Site Visit	Pump House	Power Lines	Broken power line post on top of hill behind pump house	
6	3/13/2017	Kate Ruble	<a href="#">P3130046.JPG</a>	Site Visit	Pump House	Power Lines	Inspection of broken power lines	
7	3/13/2017	Kate Ruble	<a href="#">P3130047.JPG</a>	Site Visit	Pump House	Power Lines	Inspection of broken power lines	
8	3/13/2017	Kate Ruble	<a href="#">P3130048.JPG</a>	Site Visit	Pump House	Power Lines	Broken power line post on top of hill behind pump house	



**Northern Bedrock Historic Preservation Corps**  
*Building a pathway to the preservation trades*

# Table – Conditions Assessments

- Biogrowth on the roof needs to be removed

## Siding Log Conditions-

## End Cap Log Conditions-

North Wall	East Wall	South Wall	West Wall	Northeast	Northwest	Southeast	Southwest
4 cracks in foundation	Metal bar sticking out of the ground	1- Monitor	6L - Hole in log	1R - Check	7R - Check	4L - Check	3R- Rot
	1 crack in foundation	3 cracks in foundation	Sliding boat door needs repair	3R - Check	9R - Check		7R- Check
	Door needs new hardware		2 cracks in foundation	7R - Check	4L - Check		2L - Check
				5L - Check	6L - Check		4L - Check
				6L - Check			5L - Check
				7L - Check			6L - Check
							8L- Check
							9L- Check
							10L- Check

\*All numbers are counting the logs from the foundation up

Building Interior:

- Cracks in concrete floor



**Northern Bedrock Historic Preservation Corps**

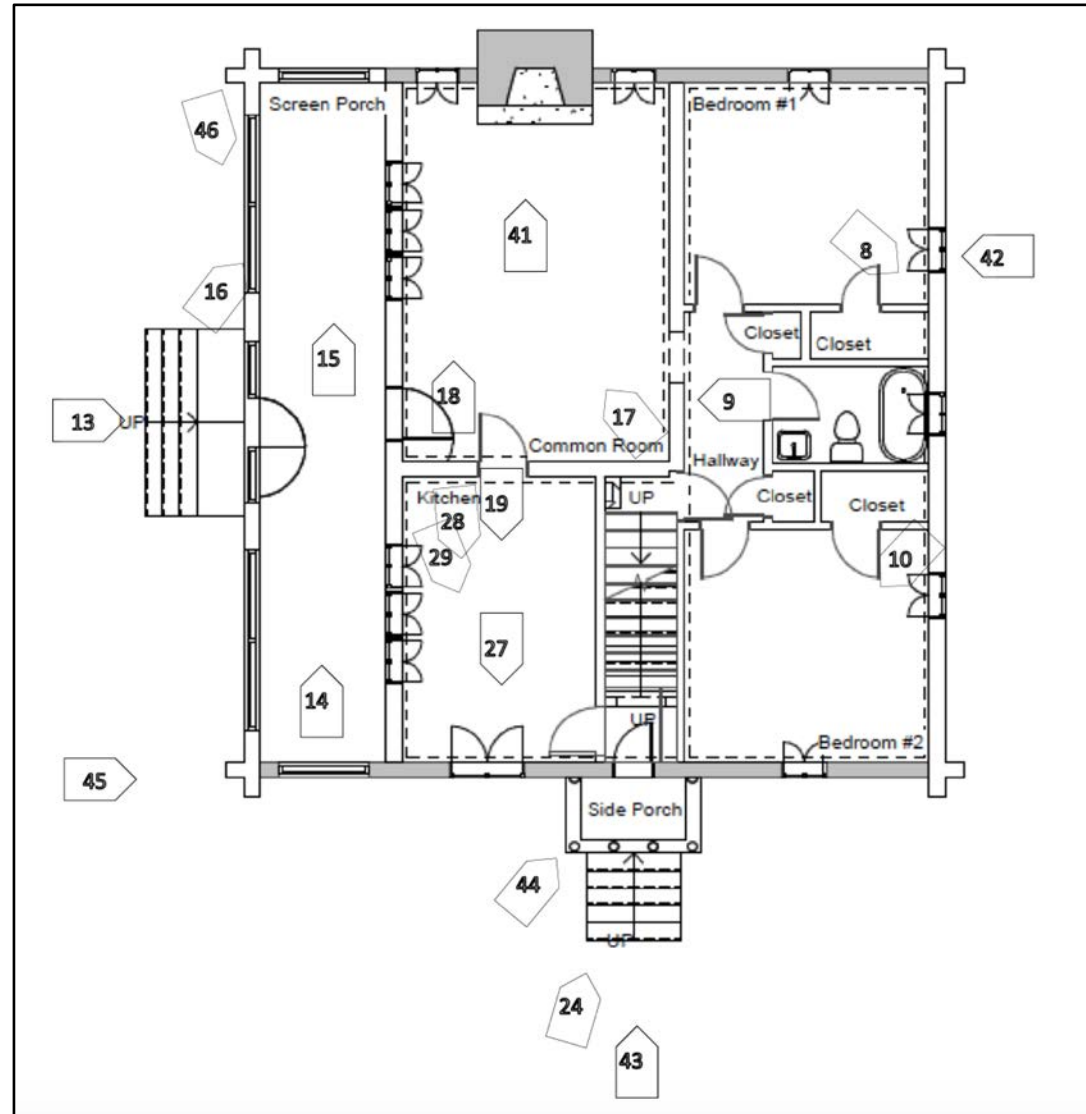
*Building a pathway to the preservation trades*





**Northern Bedrock Historic Preservation Corps**  
*Building a pathway to the preservation trades*

# Floor Plan



**Northern Bedrock Historic Preservation Corps**  
*Building a pathway to the preservation trades*






# Back to the Computer

- ~~Folders~~
  - ~~What makes sense~~
- ~~Spreadsheets~~
  - ~~Photo logs, tables~~
- Labels
  - North, South, Front, Back, rotten log
- Document
  - Date, square footage, work done





# Label your photos

District Office Exterior South 6.JPG	District Office Exterior South.JPG	 ☆☆☆☆ District Office Exterior West 2.JPG	District Office Exterior West 3.JPG
			
District Office Exterior West 4.JPG	District Office Exterior West 5.JPG	District Office Exterior West 6.JPG	District Office Exterior West.JPG



**Northern Bedrock Historic Preservation Corps**  
*Building a pathway to the preservation trades*

# A chance to Document other things

- Square Footage
  - Easy for bidding, contractors, paint supplies, number of acres
- Date
  - Everything should have a date
- Make sure to document work done



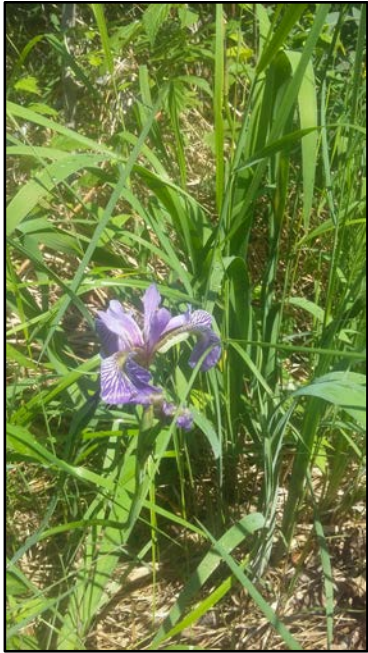
**Northern Bedrock Historic Preservation Corps**  
*Building a pathway to the preservation trades*

# Friendly Reminder



**Northern Bedrock Historic Preservation Corps**  
*Building a pathway to the preservation trades*





Jessica Fortney

Historic Preservation Specialist/Program Manager

Northern Bedrock Historic Preservation Corps

[www.northernbedrockcorps.org](http://www.northernbedrockcorps.org)

IG: [northernbedrockcorps](#)

Facebook: [Northern Bedrock Historic Preservation Corps](#)

Halfway Ranger Station



**Northern Bedrock Historic Preservation Corps**  
*Building a pathway to the preservation trades*

